

EXHIBIT FACILITIES

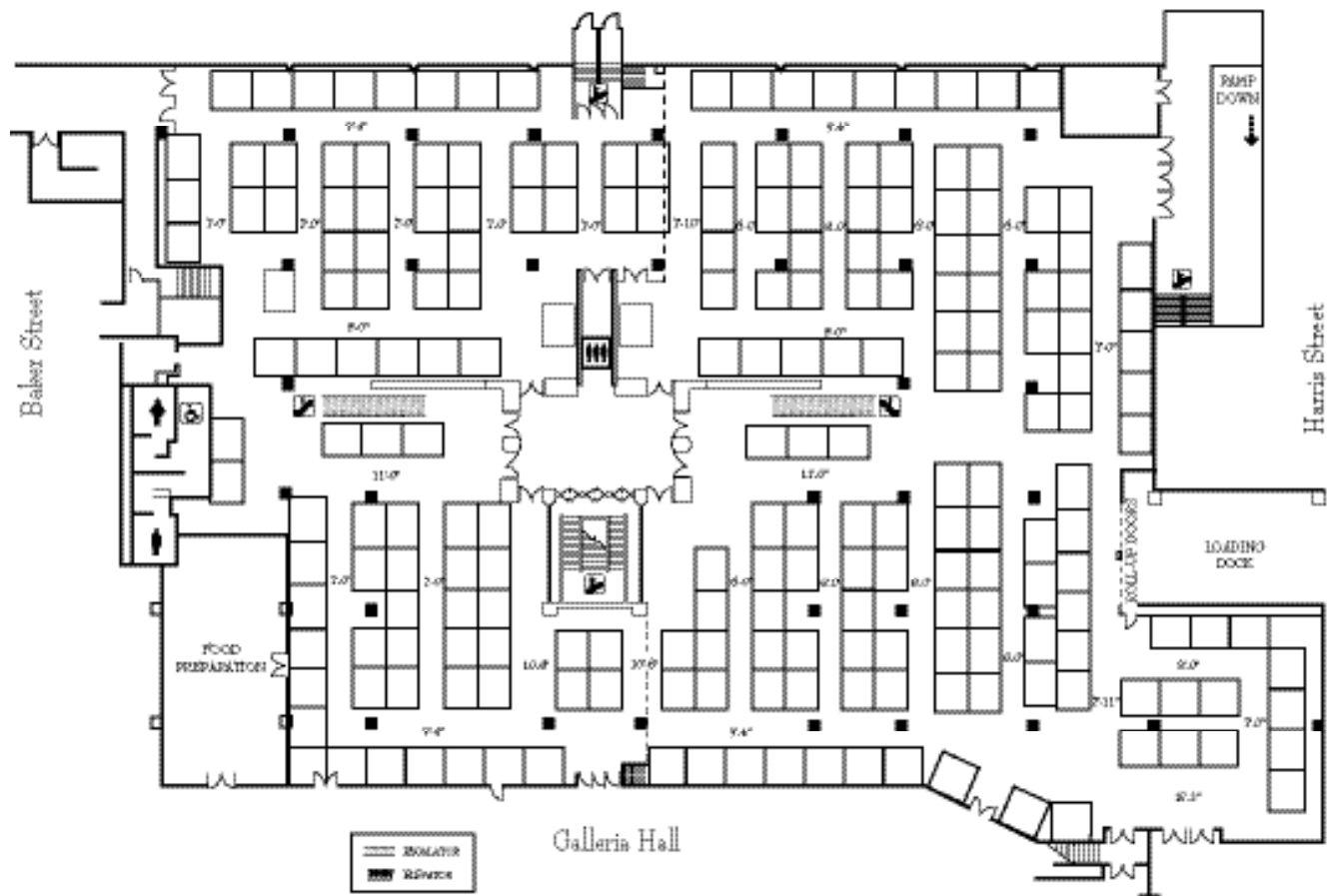
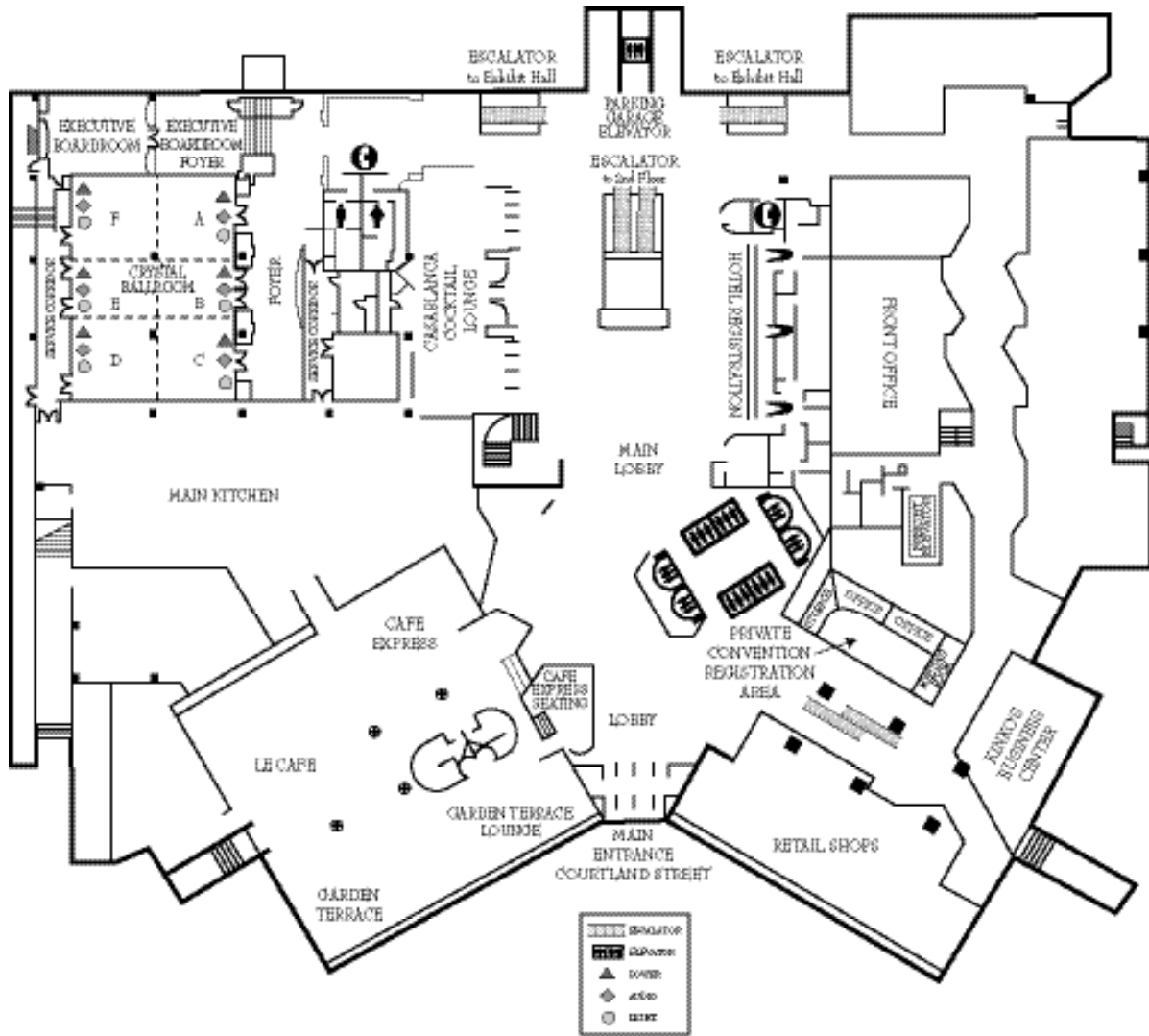


Exhibit Facilities

Room	Dimensions L x W	Square Feet*	Ceiling Height	Banquet	Exhibits 10' x 10'	Exhibits 8' x 10'
Galleria Hall	237 x 173	41,000	8'6" - 10'11"	3,000	181	216

THE SQUARE FEET NUMBERS ARE BASED ON USABLE SQUARE FOOTAGE. CAPACITIES TAKE INTO CONSIDERATION PLACEMENT OF BARS, COCKTAIL ROUNDS, FOOD STATIONS AND EXPERIENCE OF THE HOTEL.

FIRST FLOOR MEETING FACILITIES



Crystal Ballroom Capacities

Room	Dimensions L x W	Square Feet	Ceiling Height	Theater	Banquet	Reception	Conference	Board
Crystal Ballroom	76 x 55	4180	11'0"	400	350	400	N/A	
Crystal A	26 x 28	725	11'0"	75	50	75	25	
Crystal B	26 x 19	494	11'0"	50	30	50	15	
Crystal C	26 x 28	725	11'0"	75	50	75	25	
Crystal D	29 x 28	812	11'0"	80	60	80	30	
Crystal E	29 x 19	551	11'0"	55	40	55	20	
Crystal F	29 x 28	812	11'0"	80	60	80	30	
Ballroom Foyer		2246						
* Executive Boardroom	27 x 32	864	8'0"					16
Boardroom Foyer		750						

THE SQUARE FEET NUMBERS ARE BASED ON USABLE SQUARE FOOTAGE. CAPACITIES TAKE INTO CONSIDERATION PLACEMENT OF BARS, COCKTAIL ROUNDS, FOOD STATIONS AND EXPERIENCE OF THE HOTEL.

*PERMANENT BOARD TABLE.

SECOND FLOOR MEETING FACILITIES



“Welcome to Atlanta’s Smartflo™ meeting space, the city’s largest, with over 63,000 square feet of contiguous meeting space.”

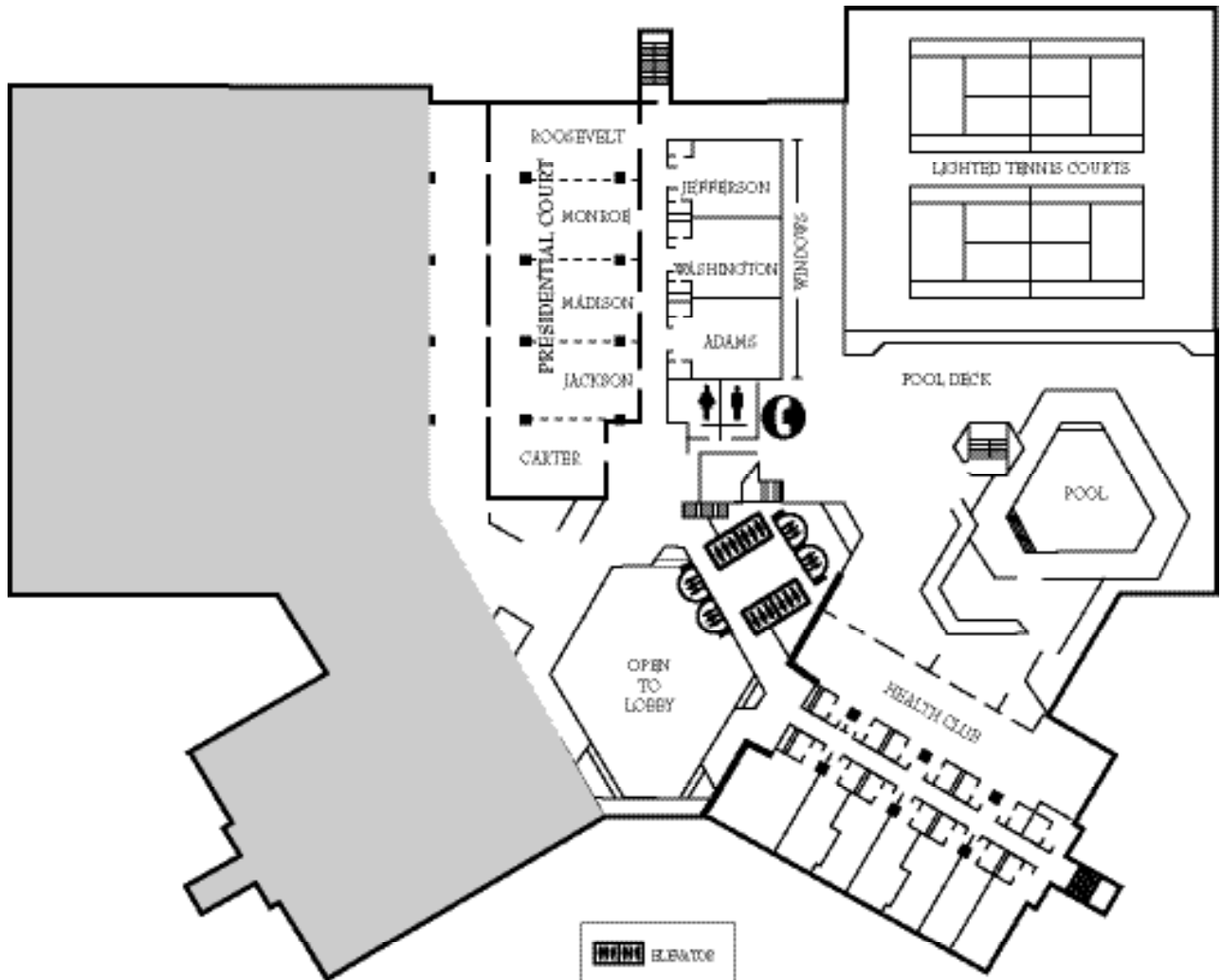
Second Floor

Room	Dimension L & W	Square Feet*	Ceiling Height†	Theatre	Schoolroom 2 per 6'	Schoolroom 3 per 6'	Banquet	Reception*	Conference
Grand Ballroom	145'x135'	18,576	15'2"	2,200	734	1101	1,650	2,200	N.A.
East Ballroom	145'x55'	7,975	15'2"	930	266	399	630	930	N.A.
West Ballroom	145'x53'	6,686	15'2"	760	254	381	570	760	N.A.
Corridor	145'x27'	3,915	15'2"	350	N.A.	N.A.	260	350	N.A.
East and Corridor	145'x82'	11,890	15'2"	1,350	400	600	900	1,350	N.A.
West and Corridor	145'x80'	10,601	15'2"	1,210	366	549	830	1,210	N.A.
Ballroom A	86'x55'	4,730	15'2"	540	134	201	320	540	46
Ballroom B	59'x55'	3,245	15'2"	370	126	189	250	370	46
Ballroom C	59'x53'	3,127	15'2"	360	126	189	250	360	46
Ballroom D	86'x53'	3,559	15'2"	390	126	189	250	390	46
Grand Salon	136'x125'	16,244	8'3"	1,900	N.A.	N.A.	1,320	1,900	N.A.
East Salon	125'x58'	6,494	8'3"	700	210	315	500	700	N.A.
West Salon	125'x56'	7,000	8'3"	800	240	360	530	800	N.A.
Corridor	88'x22'	1,936	8'3"	N.A.	N.A.	N.A.	N.A.	N.A.	N.A.
East and Corridor	125'x80'	9,244	8'3"	1,000	N.A.	N.A.	760	1,000	N.A.
West and Corridor	125'x78'	9,750	8'3"	1,050	N.A.	N.A.	790	1,050	N.A.
Salon A	58'x54'	2,376	8'3"	250	50	75	190	250	40
Salon B	58'x34'	1,972	8'3"	210	64	96	120	210	40
Salon C	80'x37'	2,960	8'3"	320	88	132	240	320	52
Salon D	71'x56'	3,976	8'3"	420	130	195	280	420	46
Salon E	56'x54'	3,024	8'3"	340	110	165	220	340	46
Northern Court	N.A.	2,610	9'10"	260	84	126	260	280	N.A.
Fulton	34'x25'	850	9'10"	90	30	45	80	90	28
Cobb	30'x27'	810	9'10"	80	26	39	80	80	28
Clayton	38'x25'	950	9'10"	110	40	60	100	110	34
Douglas	34'x25'	740	9'10"	70	20	30	50	70	24
Paulding	34'x27'	810	9'10"	80	26	39	80	80	28
DeKalb	34'x27'	810	9'10"	80	26	39	80	80	28
Gwinnett	40'x24'	960	9'10"	110	40	60	100	110	34
Southern Court	N.A.	N.A.	N.A.	N.A.	N.A.	N.A.	N.A.	N.A.	N.A.
Henry	40'x26'	1,040	9'10"	110	40	60	100	110	34
Cherokee	45'x25'	1,125	8'6"	130	44	66	100	130	40
Walton	44'x27'	1,188	8'6"	120	44	66	100	120	40
Fayette	39'x25'	765	9'10"	70	20	30	50	70	24
Newton	35'x27'	945	9'10"	90	30	45	80	90	28
Rockdale	31'x27'	835	9'10"	80	26	39	80	80	28
Forsythe	40'x26'	1,040	9'10"	110	40	60	100	110	34

THE SQUARE FEET NUMBERS ARE BASED ON USABLE SQUARE FOOTAGE. CAPACITIES TAKE INTO CONSIDERATION PLACEMENT OF BARS, COCKTAIL ROUNDS, FOOD STATIONS AND EXPERIENCE OF THE HOTEL.

† GRAND BALLROOM EXTENSION CEILING HEIGHT: 8'6"

THIRD FLOOR MEETING FACILITIES

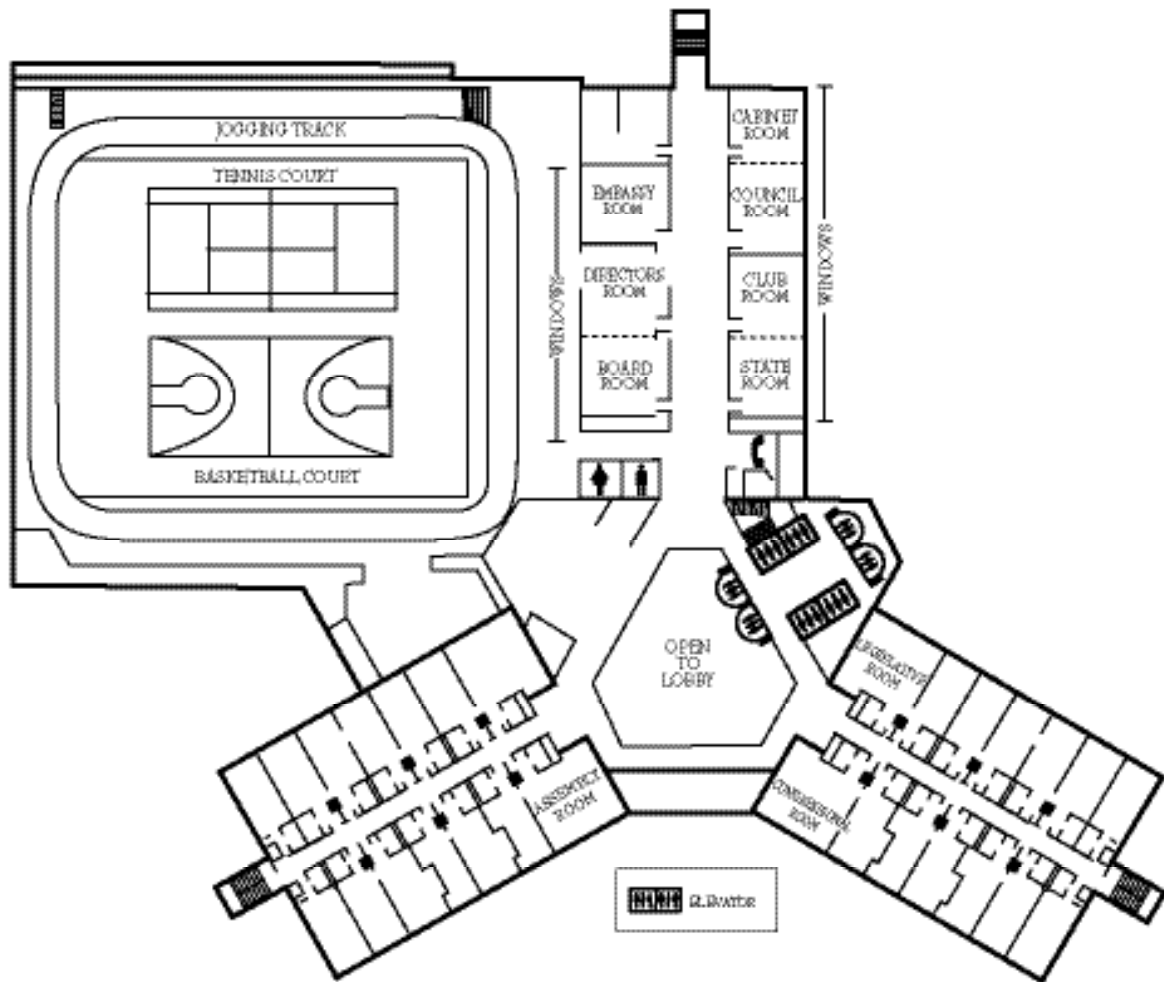


Third Floor

Room	Dimensions LxW	Square Feet*	Ceiling Height	Theatre	Schoolroom 2 per 6'	Schoolroom 3 per 6'	Banquet	Reception**	Conference	Exhibits 10' x 10'	Exhibits 8' x 10'
Presidential Court	130x48	5,987	9'10"	400	144	216	350	550	N.A.	N.A.	N.A.
Carter	37x23	851	9'10"	90	34	51	60	80	34	N.A.	N.A.
Jackson	48x30	1,440	9'10"	120	46	69	80	130	40	N.A.	N.A.
Madison	48x23	1,104	9'10"	110	44	66	90	105	40	N.A.	N.A.
Monroe	48x30	1,440	9'10"	120	46	69	90	130	40	N.A.	N.A.
Roosevelt	48x24	1,152	9'10"	110	44	66	90	105	40	N.A.	N.A.
Jefferson	26x23	598	10'8"	50	18	27	40	50	26	N.A.	N.A.
Washington	26x23	598	10'8"	50	18	27	40	50	26	N.A.	N.A.
Adams	26x23	598	10'8"	50	18	27	40	50	26	N.A.	N.A.

THE SQUARE FEET NUMBERS ARE BASED ON USABLE SQUARE FOOTAGE. CAPACITIES TAKE INTO CONSIDERATION PLACEMENT OF BARS, COCKTAIL ROUNDS, FOOD STATIONS AND EXPERIENCE OF THE HOTEL.

FOURTH FLOOR MEETING FACILITIES



Fourth Floor

Room	Dimensions L x W	Square Feet*	Ceiling Height	Theatre	Schoolroom 2 per 6'	Schoolroom 3 per 6'	Banquet	Reception**	Conference	Exhibits 10' x 10'	Exhibits 8' x 10'
State Room	26'x24'	624	9'11"	70	22	33	40	70	24	N.A.	N.A.
Club Room	28'x26'	728	9'11"	80	22	33	40	80	24	N.A.	N.A.
State/Club	52'x26'	1,352	9'11"	115	42	63	90	115	40	N.A.	N.A.
Council Room	26'x24'	624	9'11"	70	22	33	40	70	24	N.A.	N.A.
Cabinet Room	28'x26'	728	9'11"	80	22	33	40	80	24	N.A.	N.A.
Council/Cabinet	52'x26'	1,352	9'11"	115	42	63	90	115	40	N.A.	N.A.
Embassy Room	25'x27'	675	9'11"	75	22	33	50	75	24	N.A.	N.A.
Board Room	25'x23'	575	9'11"	65	20	30	40	65	24	N.A.	N.A.
Directors Room	25'x27'	675	9'11"	75	22	33	50	75	24	N.A.	N.A.
Board/Directors	50'x25'	1,250	9'11"	115	42	63	90	115	40	N.A.	N.A.
Assembly Room	19'3"x 25'7"	490	9'11"	50	12	18	30	60	16	N.A.	N.A.
Congressional Room	21'9"x 25'7"	555	9'11"	60	16	24	40	60	18	N.A.	N.A.
Legislative Room	21'9"x 25'7"	555	9'11"	60	16	24	40	60	18	N.A.	N.A.

THE SQUARE FEET NUMBERS ARE BASED ON USABLE SQUARE FOOTAGE. CAPACITIES TAKE INTO CONSIDERATION PLACEMENT OF BARS, COCKTAIL ROUNDS, FOOD STATIONS AND EXPERIENCE OF THE HOTEL.